



Infrastructure Development Institute-Japan



Message from the President

Dear stakeholders,

Infrastructure Development Institute – Japan (IDI) was established in 1956 as a government-affiliated organization to assist Japan's international cooperation efforts in the infrastructure development field. Since then, we have worked with governmental organizations such as the Ministry of Land, Infrastructure, Transport and Tourism (MLIT) and the Japan International Cooperation Agency (JICA) to help strengthen infrastructure development overseas. IDI has been involved in over 500 international projects, contributing through various means like assisting with project feasibility assessments, performing proof engineering tasks, organizing capacity-building training programs, and fostering government-to-government dialogue. Over 1,000 individuals from abroad have completed training programs we arranged in Japan. Many are now working in core positions in their home countries.

The global landscape for infrastructure projects is changing rapidly. A considerable amount of the infrastructure in developed economies, which underwent rapid development after World War II, is aging, and the risk of failure is increasing. Along with the trend of digital transformation, the rapid development of condition detection systems and efficient repair techniques is underway to solve this problem. Moreover, significant progress being made in advanced applications of AI and robotics is leading to diverse changes in survey, design, and construction methodologies, and O&M.

Concurrently, numerous developing nations are seeing their economies expand, yet they contend with infrastructural challenges, including congested roads and fragile urban structures, while others face stalled progress due to such problems as natural disasters, social instability, and emigration of skilled labor.

Furthermore, many countries are, or will be, facing the problems of intensified water-related disasters caused by global warming. Reducing greenhouse gas emissions is also a universal challenge.

Given these conditions, our resolve is to serve as a catalyst to overcome those challenges with effective solutions provided by us and our partners. We work to collect information on challenges countries are facing and how to meet their needs. We circulate the information we gathered to our collaborators in Japan, including government entities.

Using the feedback we receive from our collaborators, we work on delivering the technology and experience accumulated in Japan to other countries in need.

I wish you success in infrastructure management. We at IDI will be greatly pleased if we can contribute to your efforts in this field.

Goro Yasuda



Goro Yasuda P.E.Jp

Mission

The overall mission of IDI is to contribute to infrastructure development overseas, especially in developing countries, to support sustainable social development and improve people’s lives. For this mission, IDI participates in projects that promote the exchange of technologies and information related to infrastructure such as roads, bridges, dams, and rivers, as well as GIS. IDI provides assistance to promote technical dialogue on a government-to-government (G-G) and a government-to-private sector (G-P) basis. IDI was established in 1956 as a government-affiliated corporation under the jurisdiction of the Ministry of Construction (currently the Ministry of Land, Infrastructure, Transport, and Tourism (MLIT)).



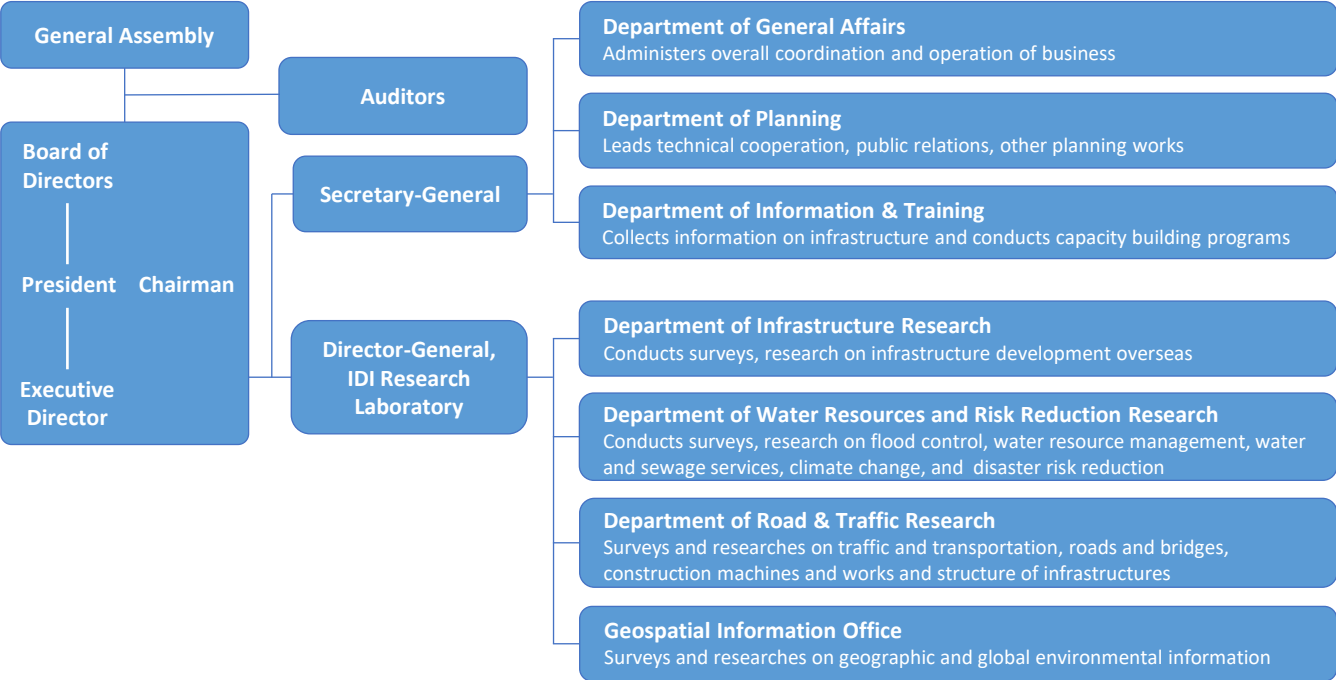
Activities

1. Promotion of international networking in the field of engineering and construction;
2. Research on the development, operation and maintenance of infrastructure overseas;
3. Capacity building and dispatching infrastructure management experts;
4. Operation and maintenance of infrastructure facilities overseas;
5. Consulting services for infrastructure projects overseas;
6. Collection and exchange of information on infrastructure with an international perspective; and
7. Promotion of publicity for infrastructure facilities both internationally and domestically.

History

Sep.1956	Inaugural Assembly
	Approval of Incorporation by Minister of Construction
Dec.1962	Engages in Overseas Technical Cooperation on MoFA’s Order until the Establishment of JICA
Jul. 1973	Co-jurisdiction by Ministry of Construction and Ministry of Transport
Jul. 1978	Establishment of IDI Research Laboratory
Oct. 1995	Opening of Paris Office (IDI-Europe)
Mar.2003	Opening of Beijing Office
Jun. 2008	Paris and Beijing Offices Closed
Apr. 2012	Transition to General Incorporated Association

Organization



Support for Trainings Activities

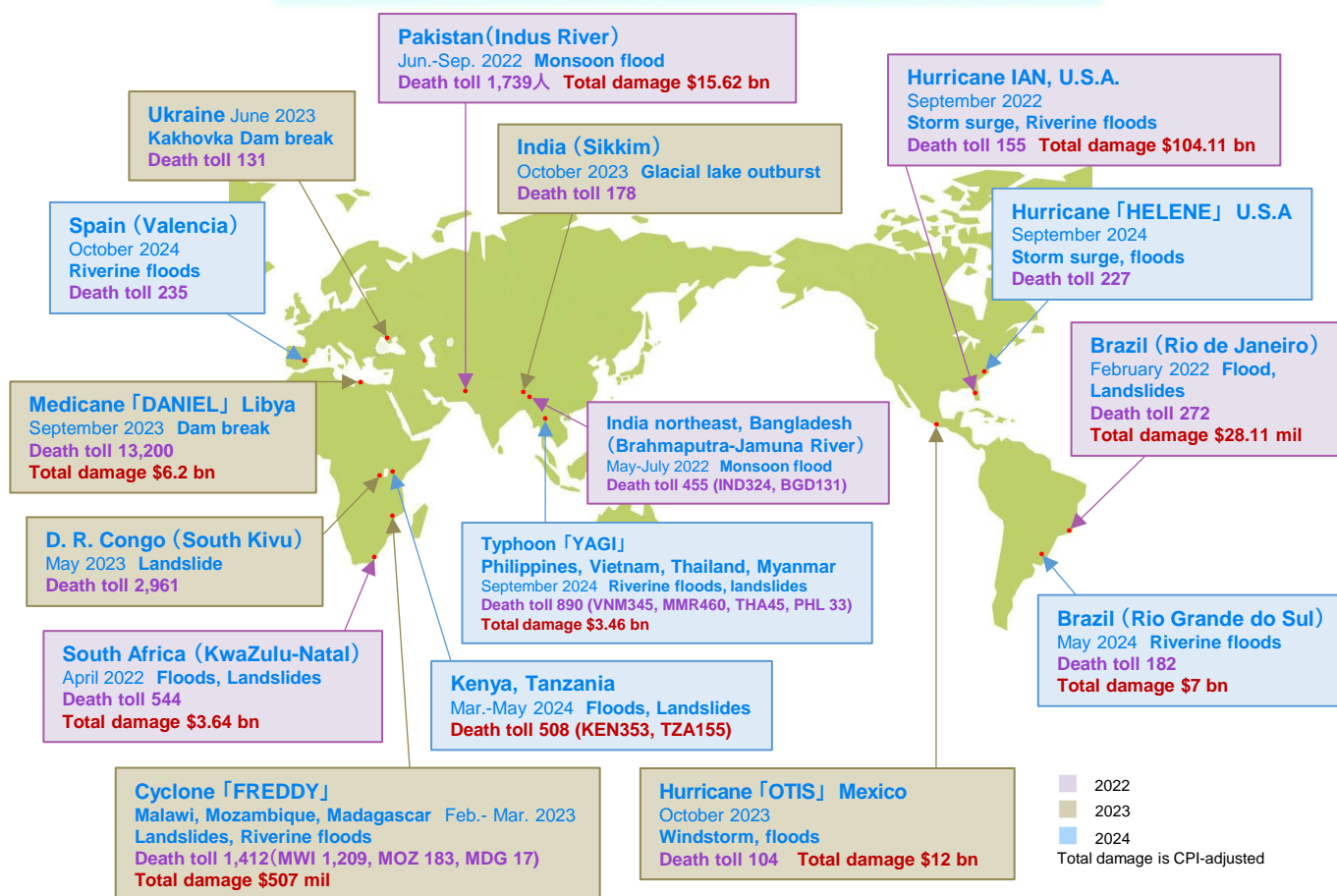
IDI supports training programs conducted in Japan, targeting government officials invited by international donors, etc., from developing countries. IDI plans and operates various kinds of training programs aimed at transferring knowledge and enhancing the policy planning capabilities of trainees.



Sharing Knowledge on Global Water Disasters

As the secretariat of the International Flood Network (IFNet), IDI contributes to global flood risk reduction in line with the Sendai Framework for Disaster Risk Reduction (2015–2030) and the Sustainable Development Goals (SDGs). Through IFNet, we provide regular newsletters on major flood events worldwide. In addition, to share Japan's knowledge and experience, we offer access to key reference materials, including Japan's guidelines on flood risk management.

Major Water-Related Disasters in 2022-2024



Exchange Programs with Overseas Organizations

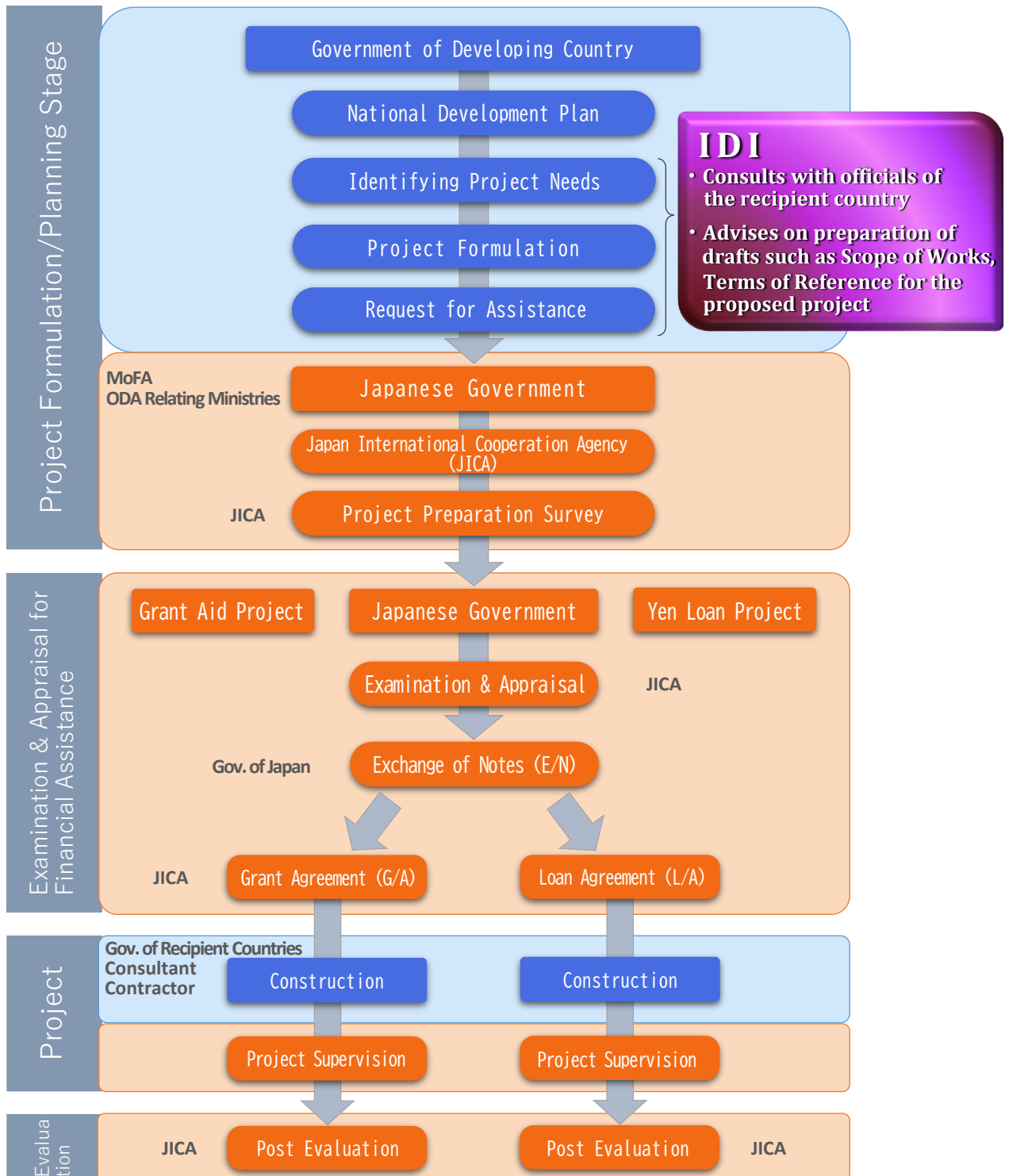
Since December 2018, IDI has conducted annual technical exchange activities with the Korea Association of Construction Engineering Management (KACEM) to promote cooperation in the development of the construction sector in both Japan and South Korea, enhance capabilities in related fields, and exchange information within the engineering and construction sector.

Project Finding and Formation Studies

In response to requests from developing countries, we provide support for the formulation of projects related to social infrastructure systems. To promote projects under Japan's ODA, we provide infrastructure-related information to relevant government agencies, the Japan International Cooperation Agency (JICA), and other entities.

IDI's Project Formation Support Fund

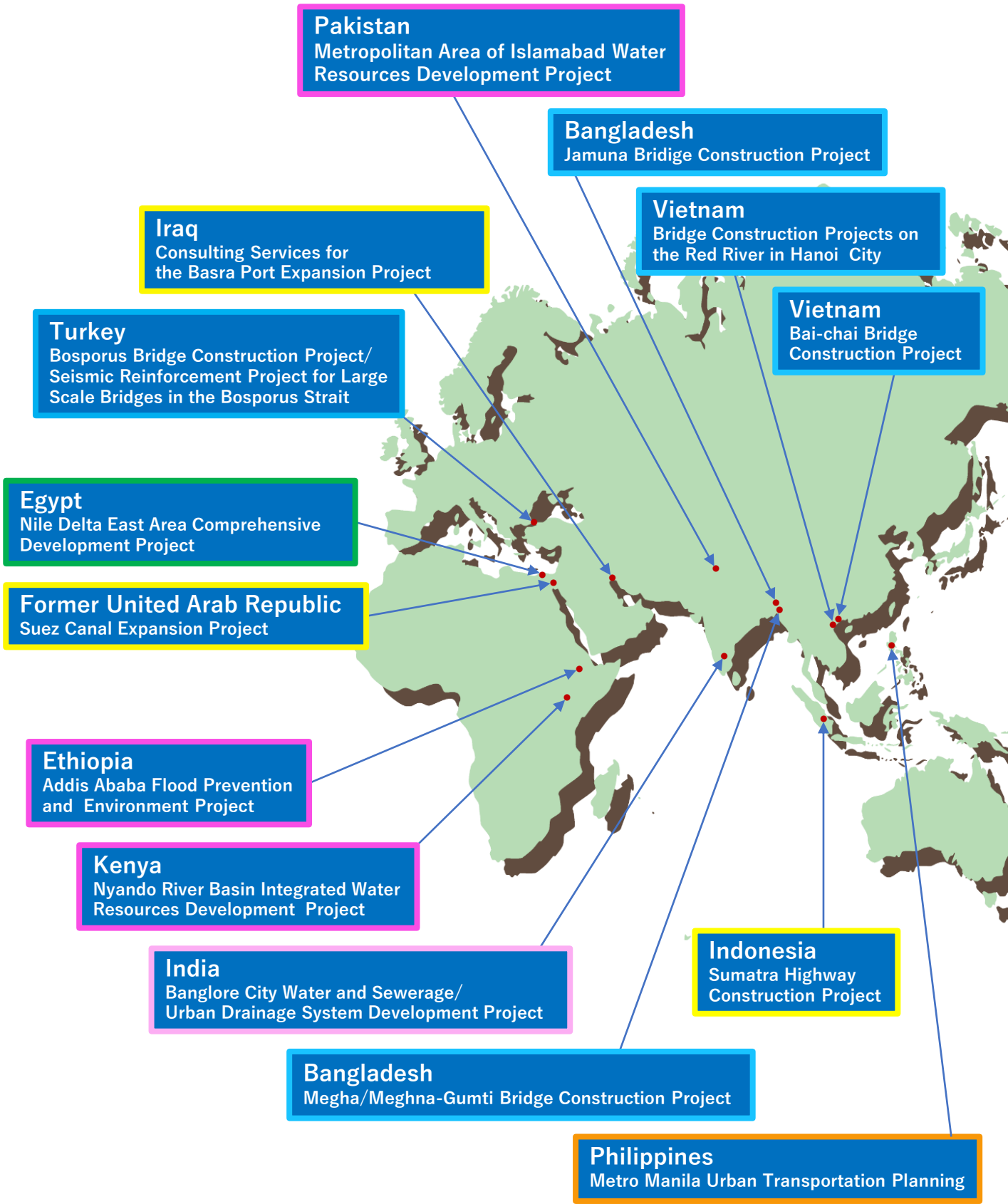
IDI reviews proposals received from member companies, and provides a portion of the funding for on-site investigations if the proposals are deemed feasible.



Flow of ODA Projects and roles of IDI (Tied Aid, Grant Aid)

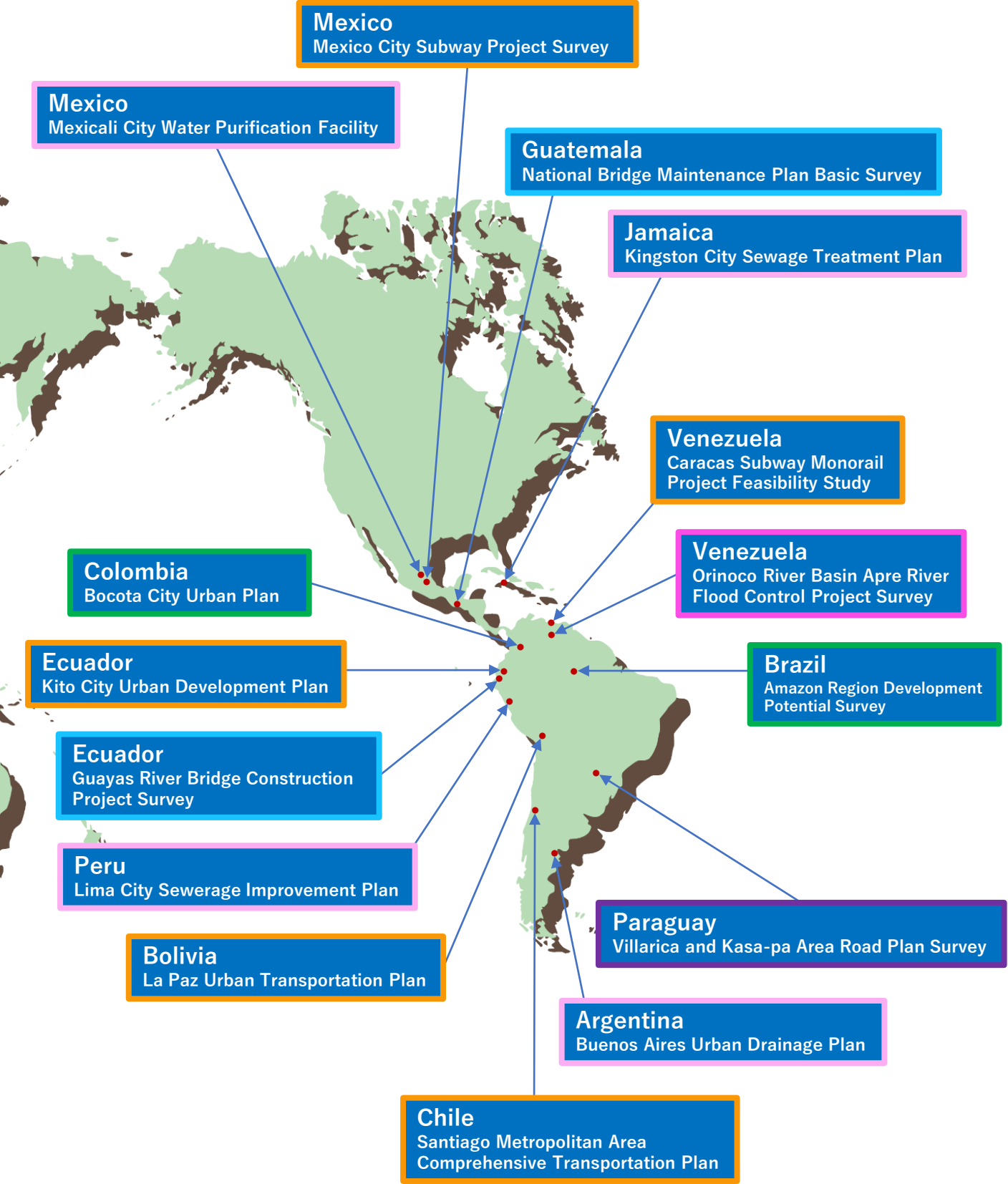
IDI's Involvement in Major Infrastructure Projects

The figure below shows a portion of over 500 projects among the world's major social infrastructure initiatives



around the World

for which IDI conducted project formation surveys.





Cambodian CORS - a GNSS based Continuously Operating Reference Station for Surveying

Infrastructure Development Institute-Japan

3F Plaza Edogawabashi Bldg., 1-23-6, Sekiguchi, Bunkyo-ku,
Tokyo 112-0014, Japan

<https://www.idi.or.jp/en>

